



METAL SOUND PROJECTOR

CELL10T/EN

This elegant, high-quality sound projector is made of extruded aluminum coated with plastic. The robust construction ensures high protection against vandalism and makes it suitable for use in shopping centers, railway stations, prisons, etc.

The specially treated chassis provides excellent speech intelligibility as well as excellent reproduction of background music.



EN54-24:2008
0905-CPR-201105
TYPE B

| | |
|---------------------------------------------------------|-------------------------------------------------------------|
| ● Standard | Compliant to EN54-24 Compliant to BS5839:8 |
| ● Electrical | |
| Rated power, Watts | 10 |
| Tappings 100 Volt line, Watts | 10/5/2.5/1.25 |
| Transformer Impedance, Ohms 100 Volt | 1k/2k/4k/8k |
| Tappings 70.7 Volt line, Watts | 5/2.5/1.25/0.625 |
| Driver impedance, Ohms | 8 |
| Effective Frequency Range, Hz (BSEN60268-5) | 120-18.000 |
| S.P.L. @ 1 m, 1 Watt, dB, Octave, 100 Hz-10 kHz | 92 |
| S.P.L. @ 1 m, Full power, dB, Octave, 100 Hz-10 kHz | 102 |
| S.P.L. @ 4 m, 1 Watt, dB, 1/3 Octave, 100 Hz-10 kHz | 75 |
| S.P.L. @ 4 m, Full power, dB, 1/3 Octave, 100 Hz-10 kHz | 85 |
| Dispersion at 1k/2k Hz, Degrees | 203/116 Horizontal 199/118 Vertical |
| ● Environmental | |
| IP Rating | 66 |
| Min/Max amb temp | -25°C to 70°C |
| Relative Humidity | ≤95% |
| ● Mechanical | |
| Dimensions, front dia x D, mm | Ø140 x 191 |
| Net weight, kg | 1.9 |
| Colour (Unless Specified) | White, RAL9016 |
| Material | Aluminium with Stainless Steel Hardware. Aluminium grill |
| Mounting | Aluminium U bracket |
| Safety | Ceramic Block Thermal Fuse |



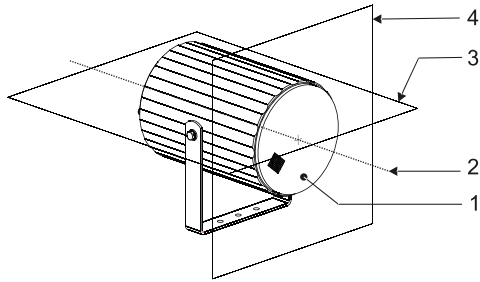
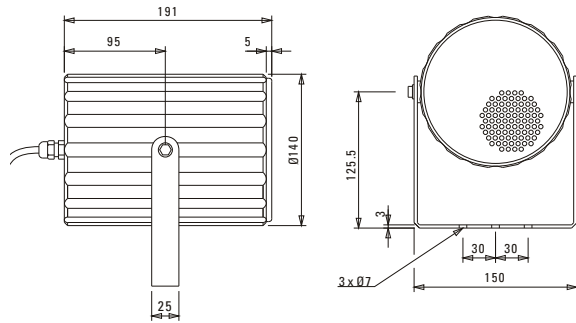
ATEIS Europe B.V.
 Celsiusstraat 1, 2652 XN Lansingerland, Netherlands
 Phone +31 (0)10 208 86 90, www.ateis-europe.com, info@ateis-europe.com



INSTALLATION GUIDE

CELL10T/EN

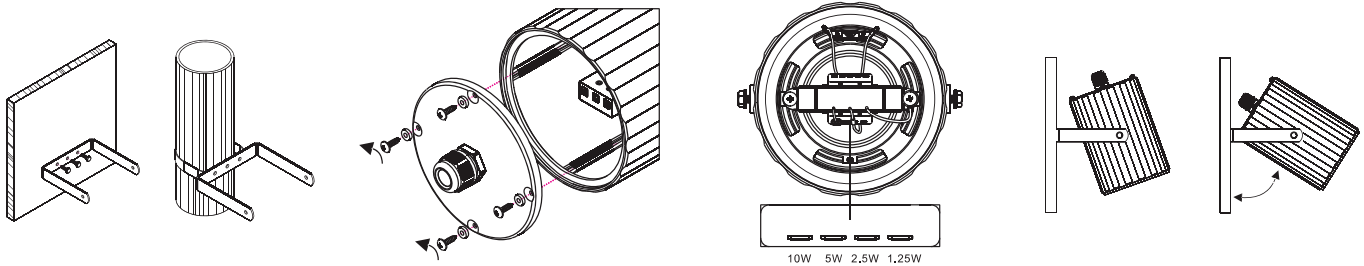
EN54-24:2008
0905-CPR-201105
TYPE B



1. Loudspeaker enclosure
2. Reference axis
3. Reference plane
4. Horizontal plane

**With Transformer:
100V/70V line**

| | White wire plus tapping | | | | Black |
|---------|-------------------------|-------|------|-----|-------|
| 100V | 1.25W | 2.5W | 5W | 10W | COM |
| 70V | 0.625W | 1.25W | 2.5W | 5W | COM |
| IMP (Ω) | 8K | 4K | 2K | 1K | |



1) Remove the "U" bracket from the speaker. Align the bracket and mark the fixing points. Fix the bracket using suitable fixings (Not supplied).

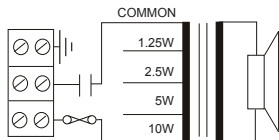
2) Remove the rear cover. The installation cable can be fitted via suitably rated glands into the 1 x 20 mm gland entries provided.

3) The cable can then be terminated into the terminal block fitted to the rear of the speaker. The terminals are suitable to take "loop in"/"loop out" connections up to 2.5 mm per core.

4) Select the desired tapping.

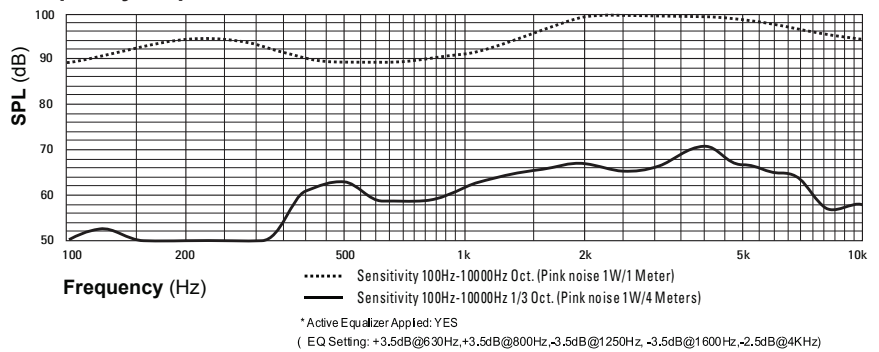
5) Re-fit the rear cover ensuring that the gasket is in place and that the screw fittings are fitted with their rubber washers to ensure the rear cover retains its weatherproof rating.

6) Re-fit the speaker to the "U" bracket. Position the speaker to the desired angle then tighten the fixings to secure in place.



Circuit Diagram

Frequency response



Disclaimer: We reserve the right of changes and errors.



ATEiS Europe B.V.
Celsiusstraat 1, 2652 XN Lansingerland, Netherlands
Phone +31 (0)10 208 86 90, www.ateis-europe.com, info@ateis-europe.com

