



USER MANUAL



ENGLISH

Pixeltube 16

V1

Product code: 44521

Preface

Thank you for purchasing this Showtec product.

The purpose of this user manual is to provide instructions for the correct and safe use of this product.

Keep the user manual for future reference as it is an integral part of the product. The user manual shall be stored at an easily accessible location.

This user manual contains information concerning:

- Safety instructions
- Intended and non-intended use of the device
- Installation and operation of the device
- Maintenance procedures
- Troubleshooting
- Transport, storage and disposal of the device

Non-observance of the instructions in this user manual may result in serious injuries and damage of property.

©2021 Showtec. All rights reserved.

No part of this document may be copied, published or otherwise reproduced without the prior written consent of Highlite International.

Design and product specifications are subject to change without prior notice.

For the latest version of this document or for other language versions, please visit our website www.highlite.com or contact us at service@highlite.com.

Highlite International and its authorized service providers are not liable for any injury, damage, direct or indirect loss, consequential or economic loss or any other loss arising from the use of, or inability to use or reliance on the information contained in this document.

Table of contents

| | |
|--|--|
| 1. Introduction | 3 |
| 1.1. Before Using the Product | 3 |
| 1.2. Intended Use | 3 |
| 1.3. LEDs Lifespan | 3 |
| 1.4. Text Conventions | 3 |
| 1.5. Symbols and Signal Words..... | 4 |
| 1.6. Symbols on the Information Label | 4 |
| 2. Safety | 5 |
| 2.1. Warnings and Safety Instructions | 5 |
| 2.2. Requirements for the User..... | 6 |
| 3. Description of the Device | 7 |
| 3.1. Front View | 7 |
| 3.2. Back View | 7 |
| 3.3. Product Specifications | 7 |
| 3.4. Compatibility | 8 |
| 3.5. Recommended Software | Fout! Bladwijzer niet gedefinieerd. |
| 3.6. Dimensions..... | 8 |
| 4. Installation | 8 |
| 4.1. Safety Instructions for Installation | 8 |
| 4.2. Personal Protective Equipment | 8 |
| 4.3. Installation Site Requirements | 8 |
| 4.4. Mounting..... | 9 |
| 4.5. Connecting to Power Supply..... | 9 |
| 5. Setup | 10 |
| 5.1. Warnings and Precautions | 10 |
| 5.2. Setup Example | 10 |
| 5.3. Maximum CAT Cable Length | 11 |
| 5.4. Network Cables | 11 |
| 6. Operation | 12 |
| 6.1. Safety Instructions for Operation..... | 12 |
| 7. Troubleshooting | 12 |
| 8. Maintenance | 13 |
| 8.1. Basic Cleaning Instructions..... | 13 |
| 8.2. Corrective Maintenance | 13 |
| 9. Deinstallation, Transportation and Storage | 14 |
| 9.1. Instructions for Deinstallation..... | 14 |
| 9.2. Instructions for Transportation | 14 |
| 9.3. Storage | 14 |
| 10. Disposal | 14 |
| 11. Approval | 14 |

1. Introduction

1.1. Before Using the Product

**Important**

Read and follow the instructions in this user manual before installing, operating or servicing this product.

The manufacturer will not accept liability for any resulting damages caused by the non-observance of this manual.

After unpacking, check the contents of the box. If any parts are missing or damaged, contact your Highlite International dealer.

Your shipment includes:

- Showtec Pixeltube 16
- 2 x dedicated clamp
- RJ45 cable (1,5 m)
- User manual



Fig. 01

1.2. Intended Use

This device is intended for professional use as a linear wash light. It is suitable only for indoor installation. This device is not suitable for households and for general lighting.

Any other use, not mentioned under intended use, is regarded as non-intended and incorrect use.

1.3. LEDs Lifespan

The light output of the LEDs gradually decreases over time (lumen depreciation). High operating temperatures contribute to this process. You can extend the lifespan of the LEDs by providing adequate ventilation and operating the LEDs at the lowest possible brightness.

1.4. Text Conventions

Throughout the user manual the following text conventions are used:

- References: References to chapters and parts of the device are in bold lettering, for example: "Refer to **2. Safety**", "turn the **adjustment screw (02)**"
- 0–255: Defines a range of values
- Notes: **Note:** (in bold lettering) is followed by useful information or tips

1.5. Symbols and Signal Words

Safety notes and warnings are indicated throughout the user manual by safety signs.

Always follow the instructions provided in this user manual.



DANGER

Indicates an imminently hazardous situation which, if not avoided, will result in death or serious injury.



WARNING

Indicates a potentially hazardous situation which, if not avoided, could result in death or serious injury.



CAUTION

Indicates a potentially hazardous situation, which, if not avoided, may result in minor or moderate injury.



Attention

Indicates important information for the correct operation and use of the product.



Important

Read and observe the instructions in this document.



Provides important information about the disposal of this product.



1.6. Symbols on the Information Label

This product is provided with an information label. The information label is located on the backside of the device.

The information label contains the following symbols:



This device is designed for indoor use.



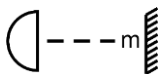
This device shall not be treated as household waste.



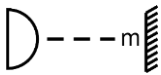
This device is IEC protection class III.



Read and observe the instructions in the user manual.



Minimum distance from lighted objects.



Minimum distance from other objects.

2. Safety



Important
Read and follow the instructions in this user manual before installing, operating or servicing this product.

The manufacturer will not accept liability for any resulting damages caused by the non-observance of this manual.

2.1. Warnings and Safety Instructions



DANGER
Danger for children

For adult use only. The device must be installed beyond the reach of children.

- Do not leave various parts of the packaging (plastic bags, polystyrene foam, nails, etc.) within children's reach. Packaging material is a potential source of danger for children.



WARNING
Risk of epileptic shock

Strobe lighting can trigger seizures in photosensitive epilepsy. Sensitive persons should avoid looking at strobe lights.



Attention
General safety

- Do not switch the device on and off in short intervals. This decreases the device's life.
- Do not shake the device. Avoid brute force when installing or operating the device.



Attention
For professional use only
This device shall be used only for the purposes it is designed for.

This device is designed to be used as a linear wash light. Any incorrect use may lead to hazardous situations and result in injuries and material damage.

- This device is not suitable for households and for general lighting.
- This device does not contain user-serviceable parts. Unauthorized modifications to the device will render the warranty void. Such modifications may result in injuries and material damage.

**Attention**

Before each use, examine the device visually for any defects.

Make sure that:

- There are no deformations on the housing and the dedicated mounting brackets.
- There is no damage to the RJ45 connectors.
- The transparent LED cover is not cracked or damaged.
- The CAT cables used for connection of the device are not damaged and do not show any material fatigue.

**Attention**

Do not expose the device to conditions that exceed the rated IP class conditions.

This device is IP20 rated. IP (Ingress Protection) 20 class provides protection against solid objects greater than 12 mm, such as fingers, and no protection against harmful ingress of water.

2.2. Requirements for the User

This product may be used by ordinary persons. Maintenance may be carried by ordinary persons. Installation and service shall be carried out only by instructed or skilled persons. Contact your Highlite dealer for more information.

Instructed persons have been instructed and trained by a skilled person, or are supervised by a skilled person, for specific tasks and work activities associated with the installation, service and maintenance of this product, so that they can identify risks and take precautions to avoid them.

Skilled persons have training or experience, which enables them to recognize risks and to avoid hazards associated with the installation, service and maintenance of this product.

Ordinary persons are all persons other than instructed persons and skilled persons. Ordinary persons include not only users of the product but also any other persons that may have access to the device or who may be in the vicinity of the device.

3. Description of the Device

The Showtec Pixeltube 16 is a decorative LED bar with 16 RGB LEDs. It can be installed without any screws or tools. The Pixeltube 16 only works with the dedicated Pixel Controller. It is suitable only for indoor installation (e.g. in hotels or theaters, in order to create a good ambience in a lobby).

3.1. Front View

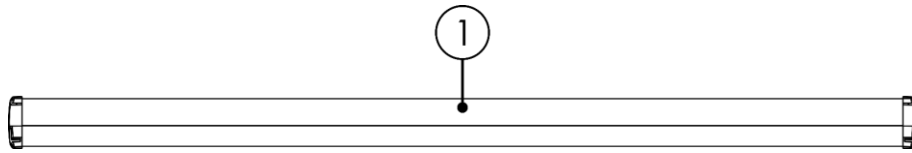


Fig. 02

01) 16 x RGB SMD3535 LEDs

3.2. Back View



Fig. 03

02) RJ45 Pixeltube connector OUT

03) RJ45 Pixeltube connector IN

3.3. Product Specifications

| | |
|---|------------------------------|
| Model: | Pixeltube 16 |
| Physical: | |
| Dimensions: | 505 x 29 x 32 mm (L x W x H) |
| Weight: | 0,13 kg |
| Optics: | |
| Light source: | 16 x RGB SMD3535 LEDs |
| Connections: | |
| Data connections: | 2 x RJ45 connectors IN/OUT |
| Max. distance from Pixeltube to the Pixel Controller: | 10 m |
| Construction: | |
| Housing: | Flame-retardant plastic |
| Color: | Black |
| IP rating: | IP20 |
| Thermal: | |
| Maximum ambient temperature t_a : | 40 °C |
| Maximum housing temperature t_c : | 70 °C |
| Minimum distance: | |
| Minimum distance from flammable surfaces: | 0,8 m |
| Minimum distance to lighted object: | 0,8 m |

3.4. Compatibility



Attention

The Pixeltube 16 is designed to be operated **ONLY** with the Pixel Controller.

The Pixeltube 16 is delivered without the Pixel Controller. You need to purchase the Pixel Controller separately.

Product code: [44510](#) (Pixel Controller)

3.5. Recommended Software

Product code: [50180](#) (Arkaos LED Master)

Product code: [102101](#) (Arkaos Media Master Express 5.0)

Product code: [102201](#) (Arkaos Media Master Pro 5.0)

3.6. Dimensions

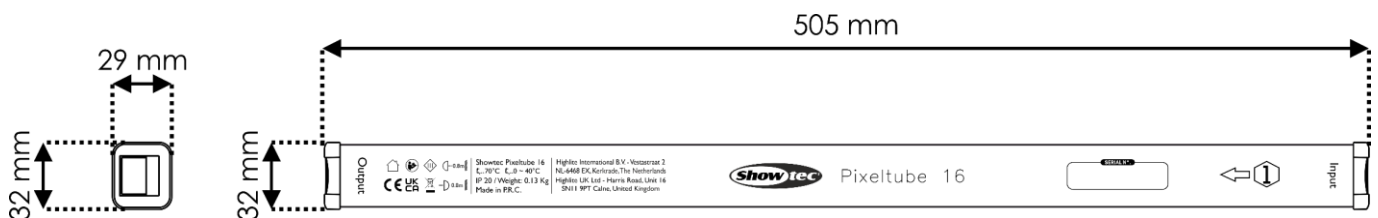


Fig. 04

4. Installation

4.1. Safety Instructions for Installation

If the device is mounted overhead, installation must be carried out only by instructed or skilled persons.

Follow all applicable European, national and local safety regulations concerning electrical installations in buildings and working at heights.

4.2. Personal Protective Equipment

During installation and rigging wear personal protective equipment in compliance with the national and site-specific regulations.

4.3. Installation Site Requirements

- The device can be used only indoors.
- The minimum distance to other objects must be bigger than 0,8 m.
- The maximum ambient temperature $t_a = 40\text{ °C}$ must never be exceeded.
- The relative humidity must not exceed 50 % with an ambient temperature of 40 °C.

4.4. Mounting

The device can be mounted to a 50-mm truss or other rigging structure in any orientation.

The device is delivered with 2 mounting brackets.



CAUTION

Restrict the access under the work area during mounting and/or demounting.

To mount the device, follow the steps below:

01) Install the 2 mounting brackets.

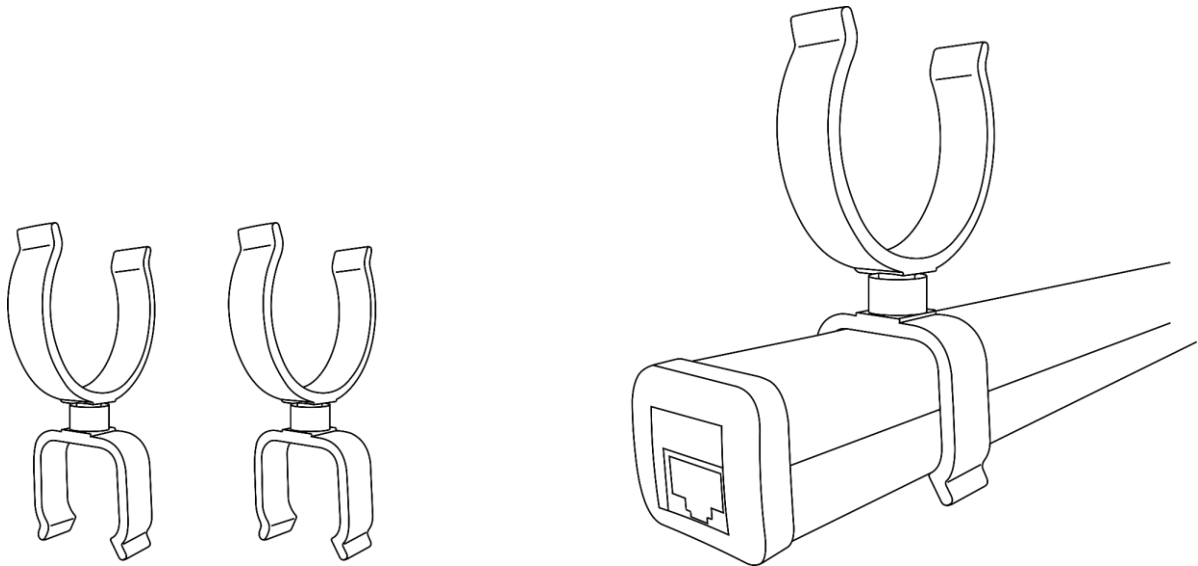


Fig. 05

02) Attach the device to the supporting structure. Make sure that the device cannot move freely.

4.5. Connecting to Power Supply

This device falls under IEC protection class III.

The device only accepts mains power from the Pixel Controller. Do not supply power from any other source to the device.

Connect the Pixel Controller's output port to the Pixeltube's **RJ45 input connector (03)** with a CAT cable (max. 10 m). For more information about the connection of power supply, see Fig. 06 on page 10 and refer to the user manual of the Pixel Controller (44510).

5. Setup

5.1. Warnings and Precautions



Attention

Connect all cables before supplying power to the system.

Disconnect from the power supply before connecting or disconnecting cables.

5.2. Setup Example

The device is designed to be operated only with the Pixel Controller. Connect the devices to each of the 4 output ports on the Pixel Controller.

The maximum setup length per output port is 5 m. Because the Pixeltube 16 is 0,5-meter long, you can connect up to 10 devices to each output port (4 output ports x 10 devices = 40 x Pixeltube 16 per Pixel Controller.)

You can combine the Pixeltube 16 (0,5 m) and Pixeltube 32 (1 m) as long as their combined length (per output port) does not exceed 5 m.

- 01) Connect the Pixel Controller's RJ45 output 1 to the first Pixeltube's RJ45 input connector with a CAT cable.
- 02) Repeat step 1 to connect the Pixeltubes to the Pixel Controller's outputs 2–4.
- 03) Connect the first Pixeltube's RJ45 output connector to the second Pixeltube's RJ45 input connector with a CAT cable.
- 04) Repeat step 3 to connect up to 10 Pixeltubes per output, as shown in Fig. 06 on page 10.

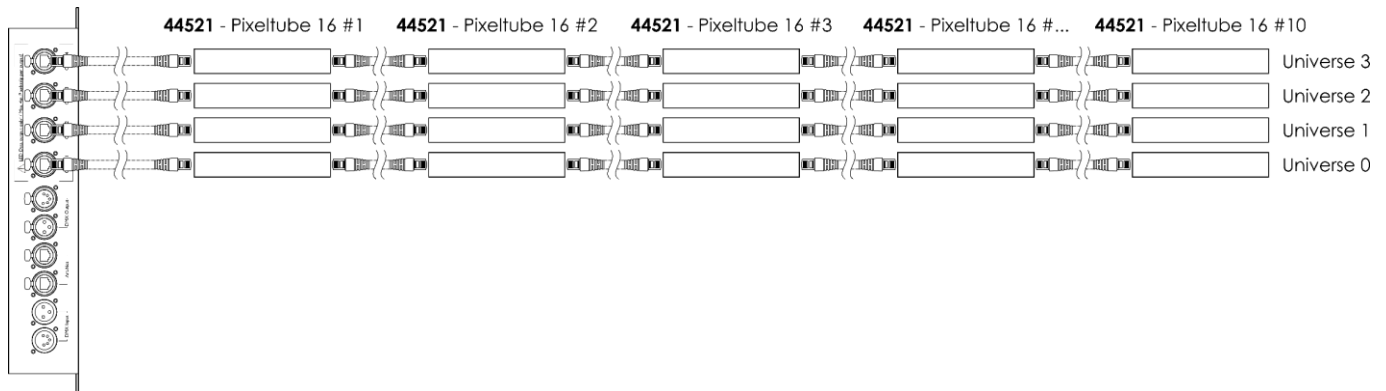


Fig. 06

For more information about the setup, refer to the user manual of the Pixel Controller (44510).

5.3. Maximum CAT Cable Length

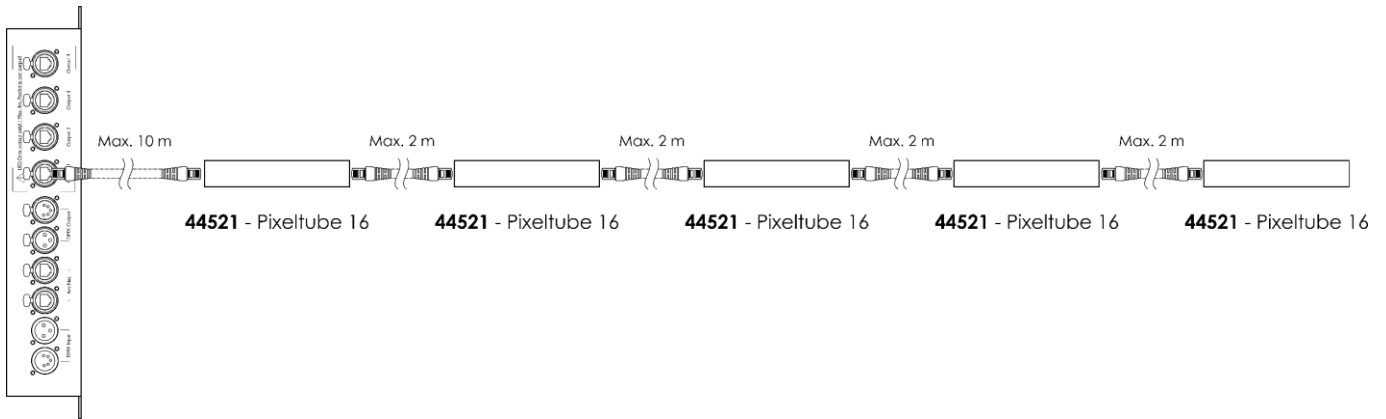


Fig. 07

The maximum allowed CAT cable length:

- Between the Pixel Controller and the first Pixeltube on a data link: 10 m
- Between the Pixeltubes: 2 m

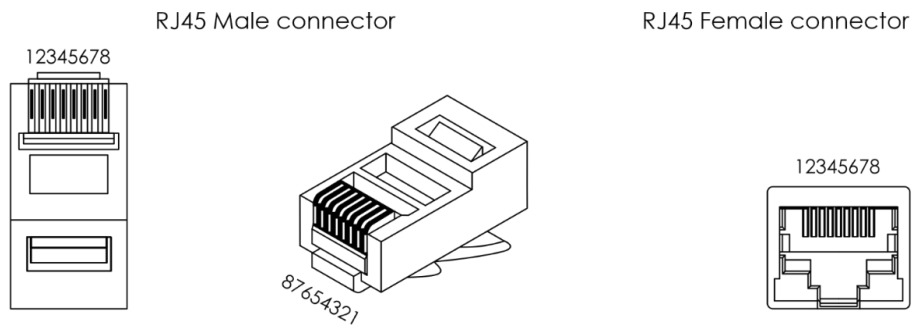
5.4. Network Cables



Attention
Connect all data cables before supplying power.
Disconnect power supply before connecting or disconnecting data cables.

Standard twisted-pair Ethernet cables (CAT-5/CAT-5E/CAT-6) can be used to connect the device to the Pixel Controller or to each other, in a daisy chain.

If you make your own network cables, make sure that you connect the pins and wires correctly as shown in Fig. 08. Use RJ45 (8P8C) connectors and patch the cables according to the T568B color standard.



Color Standard EIA/TIA T568B

| | RJ45 Pin # | | | RJ45 Pin # | | | |
|-----|------------|---------------------|---|------------|---------------------|--|------|
| TX+ | | Orange/White tracer | 1 | 1 | Orange/White tracer | | PR 2 |
| TX- | | Orange | 2 | 2 | Orange | | |
| RX+ | | Green/White tracer | 3 | 3 | Green/White tracer | | PR 3 |
| | | Blue | 4 | 4 | Blue | | |
| | | Blue/White tracer | 5 | 5 | Blue/White tracer | | PR 1 |
| RX- | | Green | 6 | 6 | Green | | |
| | | Brown/White tracer | 7 | 7 | Brown/White tracer | | PR 4 |
| | | Brown | 8 | 8 | Brown | | |

Fig. 08

6. Operation

6.1. Safety Instructions for Operation



Attention

This device must be used only for the purposes it is designed for.

This device is intended for professional use as a linear wash light. It is suitable only for indoor installation. This device is not suitable for households and for general lighting.

When the device is connected to the Pixel Controller, it can be operated with DMX, Art-Net and Kling-Net protocols. To make the whole setup work properly, it is necessary to set the desired setup length in the Pixel Controller's menu. The setup length depends on the number of devices connected to the Pixel Controller. It is possible to operate the devices manually or run the built-in programs over multiple devices, in stand-alone mode.

Any other use, not mentioned under intended use, is regarded as non-intended and incorrect use.

For more information about the operation, refer to the user manual of the Pixel Controller (44510).

7. Troubleshooting

This troubleshooting guide contains solutions to problems which can be carried out by an ordinary person. The device does not contain user-serviceable parts.

Unauthorized modifications to the device will render the warranty void. Such modifications may result in injuries and material damage.

Refer servicing to instructed or skilled persons. Contact your Highlite International dealer in case the solution is not described in the table.

| Problem | Probable cause(s) | Solution |
|--|--|---|
| The device does not function at all | No power to the device | <ul style="list-style-type: none"> Check if the Pixel Controller is switched on and if the Pixeltube is connected to the Pixel Controller with a CAT cable |
| The device does not respond to DMX control | The Pixel Controller is not connected | <ul style="list-style-type: none"> Connect the Pixel Controller |
| | The Pixel Controller is defective | <ul style="list-style-type: none"> Disconnect the Pixel Controller and contact your Highlite International dealer |
| The device responds erratically to DMX control | Bad data link connection | <ul style="list-style-type: none"> Examine connections and cables. Correct poor connections. Repair or replace damaged cables |
| | In case of a setup with multiple devices, one of the devices is defective and disturbs data transmission on the link | <ul style="list-style-type: none"> To find out the defective device, bypass one device at a time until normal operation is restored |
| No light or LEDs cut out intermittently | LEDs are damaged | <ul style="list-style-type: none"> Disconnect the device and contact your Highlite International dealer |

8. Maintenance

Maintenance and cleaning may be carried by ordinary persons.

Follow the maintenance schedule established for the site where the device is installed.

Disconnect the Pixeltube from the Pixel Controller before servicing or cleaning.

8.1. Basic Cleaning Instructions

The transparent LED cover must be cleaned periodically in order to optimize the light output. The cleaning schedule depends on the conditions at the site where the device is installed. When smoke or fog machines are used at the site, the device will need more frequent cleaning. On the other hand, if the device is installed in well-ventilated area, it will need less frequent cleaning. To establish a cleaning schedule, examine the device at regular intervals during the first 100 hours of operation.

To clean the device, follow the steps below:

01) Disconnect the device from the Pixel Controller.

Note: If multiple Pixeltubes are connected, it is not necessary to disconnect Pixeltubes from each other.

02) Allow the device to cool down for at least 15 minutes.

03) Remove the dust collected on the external surface with dry compressed air and a soft brush.

04) Clean the transparent LED cover with a lint-free cloth.



Attention

- Do not immerse the device in liquid.
- Do not use alcohol or solvents.
- Make sure that the connections are fully dry before connecting the device to the power supply and to other devices.

8.2. Corrective Maintenance

The device does not contain user-serviceable parts. Do not open the device and do not modify the device.

Refer repairs and servicing to instructed or skilled persons. Contact your Highlite International dealer for more information.

9. Deinstallation, Transportation and Storage

9.1. Instructions for Deinstallation

- Let the device cool down before dismounting.
- Disconnect the Pixeltube from the Pixel Controller before deinstallation.
- Always observe the national and site-specific regulations during deinstallation and derigging of the device.
- Wear personal protective equipment in compliance with the national and site-specific regulations.

9.2. Instructions for Transportation

- Use the original packaging to transport the device, if possible.
- Always observe the handling instructions printed on the outer carton box, for example: "Handle with care", "This side up", "Fragile".

9.3. Storage

- Clean the device before storing. Follow the cleaning instructions in chapter **8.1. Basic Cleaning Instructions** on page 13.
- Store the device in the original packaging, if possible.

10. Disposal

Correct disposal of this product



Waste Electrical and Electronic Equipment

This symbol on the product, its packaging or documents indicates that the product shall not be treated as household waste. Dispose of this product by handing it to the respective collection point for recycling of electrical and electronic equipment. This is to avoid environmental damage or personal injury due to uncontrolled waste disposal. For more detailed information about recycling of this product contact the local authorities or the authorized dealer.

11. Approval



Check the respective product page on the website of Highlite International (www.highlite.com) for an available declaration of conformity.



©2021 Showtec