



Light efficiency:

37 Lumen/Watt

Light quality:

CRI: 92,7

Color temperature:

3135 K

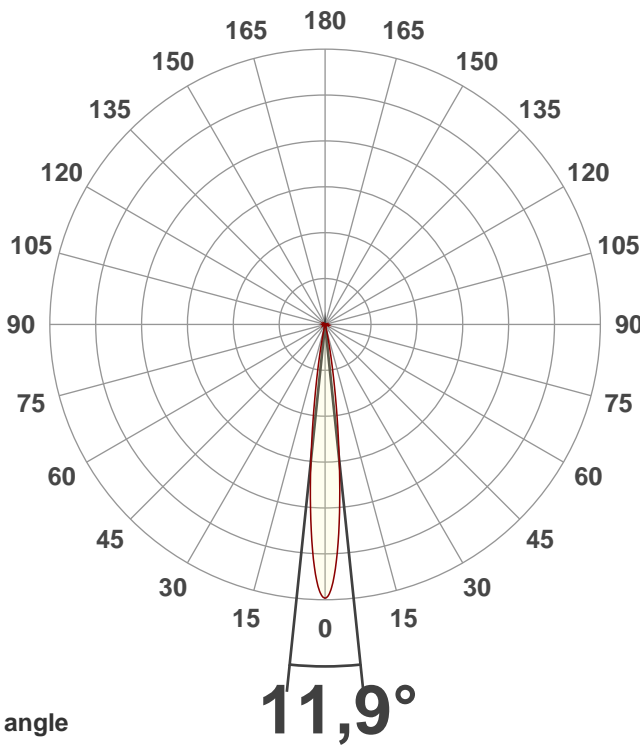
Output: 6444 lm  
Peak: 123475 cd  
Power: 172,1 W  
PF: 0,98



Product name:  
**Performer 2000 DDT MKII  
(narrow)**

Date and time:  
**28-7-2020 13:43:18**

Item number:  
**33037**

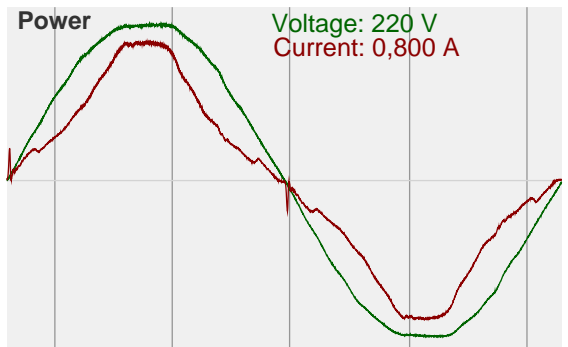
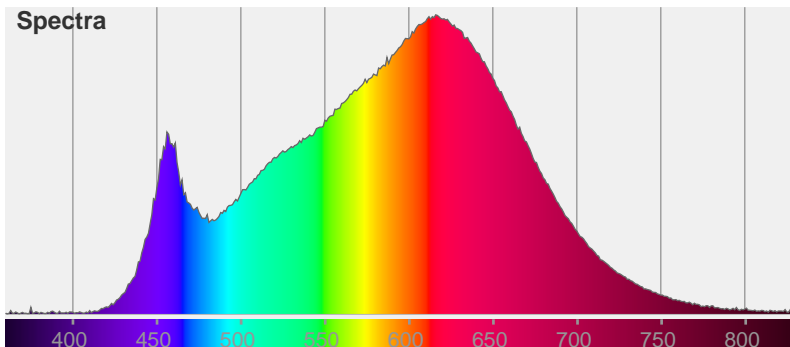


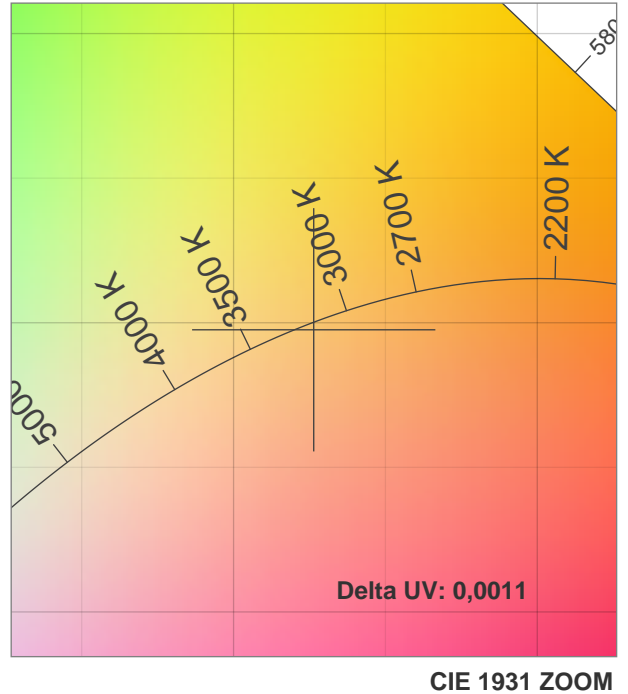
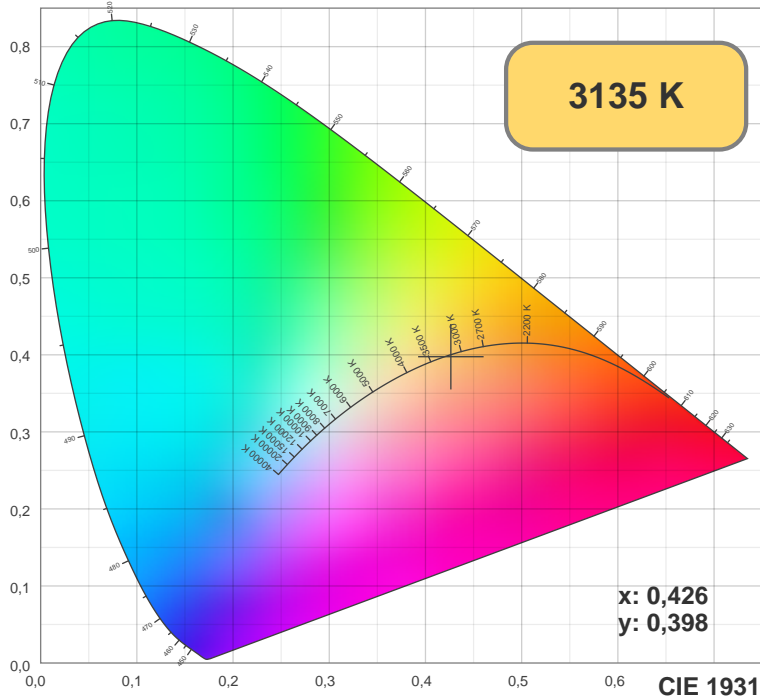
Color



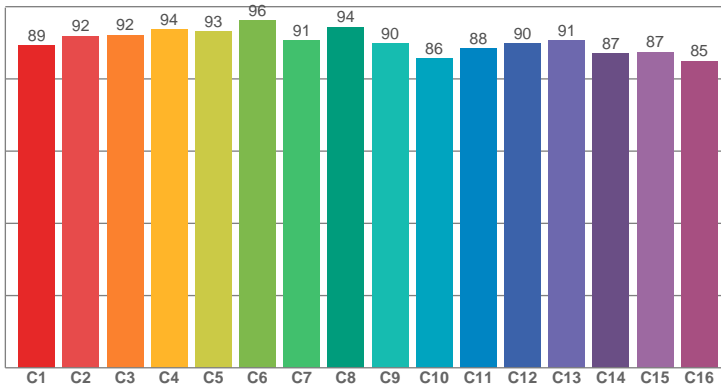
CIE1931  
x: 0,426  
y: 0,398

Spectra

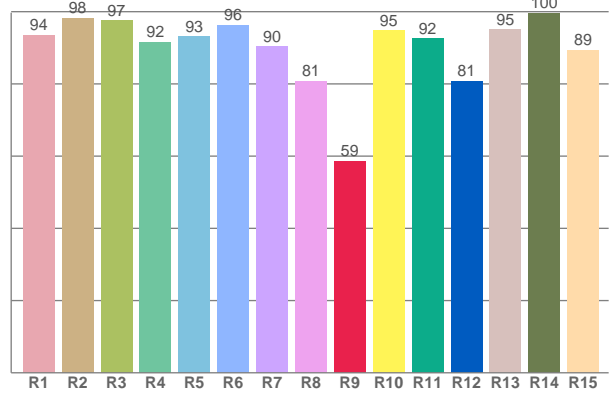




TM30: 90,5



CRI: 92,7 (R1-R8)



CRI R values, only R1-R8 are used to calculate final CRI value

R1	R2	R3	R4	R5	R6	R7	R8	R9	R10	R11	R12	R13	R14	R15
93,54	98,27	97,49	91,63	93,16	96,35	90,34	80,82	58,67	94,87	92,49	80,84	95,11	99,62	89,42

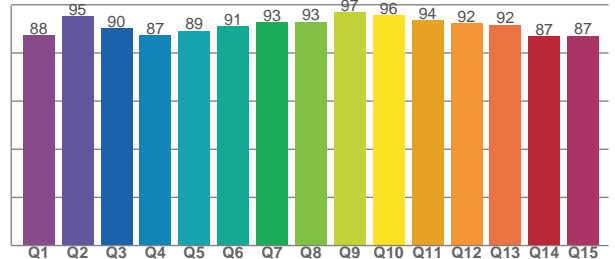
TM30 C values, 16 binned values out of total of 99 C values

C1	C2	C3	C4	C5	C6	C7	C8	C9	C10	C11	C12	C13	C14	C15	C16
89,17	91,89	92,19	93,74	93,08	96,18	90,59	94,38	89,92	85,66	88,41	89,86	90,75	87,15	87,48	85,01

CQS Q values

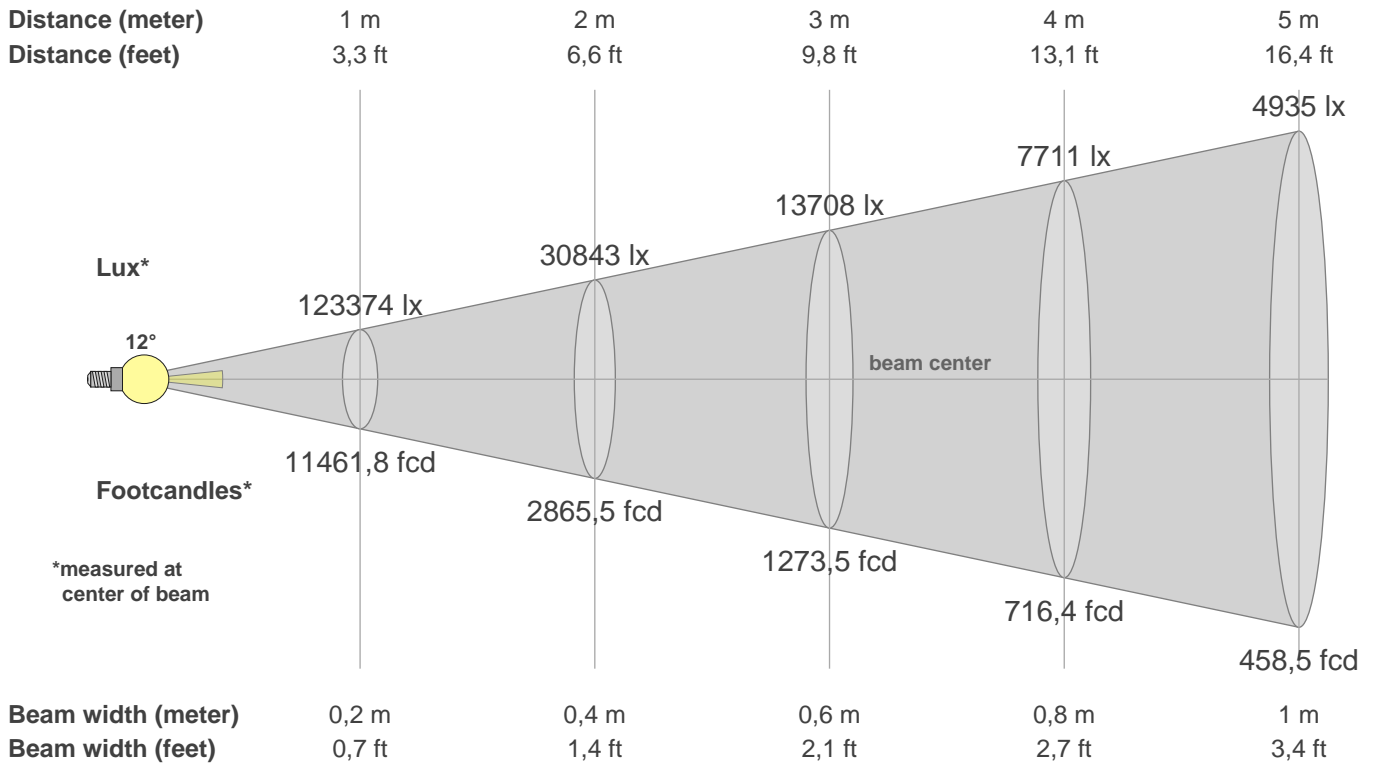
Q1	Q2	Q3	Q4	Q5	Q6	Q7	Q8	Q9	Q10	Q11	Q12	Q13	Q14	Q15
87,56	95,18	90,22	87,24	89,24	91,08	92,63	93,04	97,03	95,64	93,63	92,24	91,74	86,84	87,21

CQS: 90,7



Color parameters

CCT	CRI	CRI R9	TM30 Rf	TM30 Rg	CQS	x	y	u	v	Duv
3135 K	92,7	58,7	90,5	97,2	90,7	0,4	0,4	0,2	0,3	-0,0011



**Intensities in 0° c-plane**

0°	1°	2°	3°	4°	5°	6°	7°	8°	9°	10°	11°	12°	13°	14°	15°	16°	17°	18°	19°
123K	121K	114K	104K	91K	76K	61K	47K	35K	25K	16K	11K	7K	4K	2K	1K	1K	1K	0K	0K
100%	98%	93%	84%	73%	62%	49%	38%	28%	20%	13%	9%	5%	3%	2%	1%	1%	0%	0%	0%

**Intensities in 0° c-plane**

0°	1°	2°	3°	4°	5°	6°	7°	8°	9°	10°	11°	12°	13°	14°	15°	16°	17°	18°	19°
123K	121K	114K	104K	91K	76K	61K	47K	35K	25K	16K	11K	7K	4K	2K	1K	1K	1K	0K	0K
100%	98%	93%	84%	73%	62%	49%	38%	28%	20%	13%	9%	5%	3%	2%	1%	1%	0%	0%	0%

**Intensities in 180° c-plane**

0°	1°	2°	3°	4°	5°	6°	7°	8°	9°	10°	11°	12°	13°	14°	15°	16°	17°	18°	19°
123K	121K	115K	104K	91K	76K	61K	46K	33K	22K	14K	8K	5K	3K	1K	1K	1K	0K	0K	0K
100%	98%	93%	84%	74%	62%	49%	37%	27%	18%	11%	7%	4%	2%	1%	1%	0%	0%	0%	0%

**Intensities in 180° c-plane**

0°	1°	2°	3°	4°	5°	6°	7°	8°	9°	10°	11°	12°	13°	14°	15°	16°	17°	18°	19°
123K	121K	115K	104K	91K	76K	61K	46K	33K	22K	14K	8K	5K	3K	1K	1K	1K	0K	0K	0K
100%	98%	93%	84%	74%	62%	49%	37%	27%	18%	11%	7%	4%	2%	1%	1%	0%	0%	0%	0%

Beam angle 50%	Field angle 10%	Cutoff angle 2,5%	Intensity ratio in 120° cone	Intensity ratio in 90° cone
11,9°	20,9°	26,3°	97,7%	95,4%